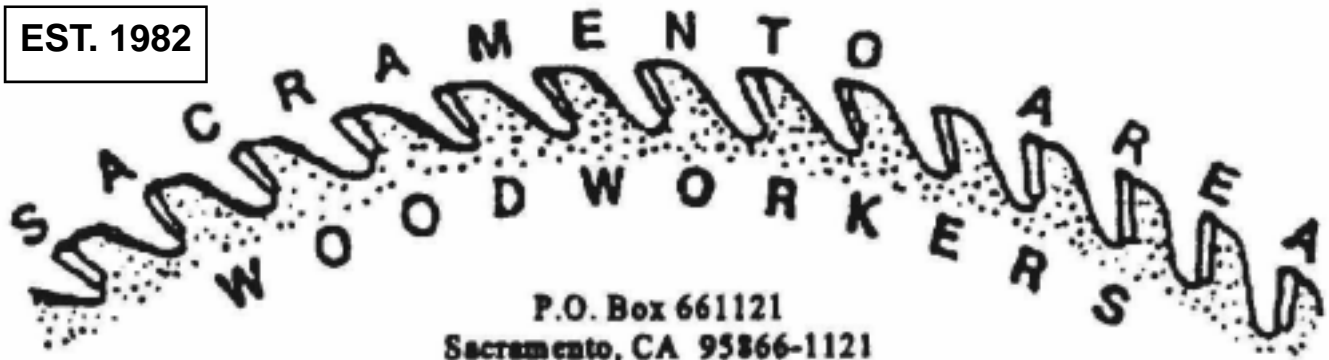


EST. 1982



<http://www.sacramentoareawoodworkers.com>

Vol. 21 No 6

SAW NEWSLETTER

June, 2004

MEETING  
ETHEL Mac Leod HART SENIOR CENTER  
915 27th STREET, SACRAMENTO, CA  
(BETWEEN I & J STREETS)  
June 1, 2004 7:00 pm

Presidents Note's, Allan Laudenslayer

Well, summer's almost here and that means it is time for the annual J.E. Higgins B-B-Q. Saturday June 5<sup>th</sup>, is the day so bring your money and your pickups so you can take advantage of the great deals that Higgins will have for us.

First, at our June 1<sup>st</sup> general meeting, we will have a presentation from one of our newer members, Joe Lesh.

Joe recently moved to Sacramento from Eureka where he taught "Basic Woodworking at the Eureka campus of the College of the Redwoods. With Joe's extensive portfolio of custom woodworking projects, his presentation should be very informative and educational for all levels of woodworkers. One of his areas of expertise is creating project plans, and I think we all could use some quality tips in this area. I know I can.

In addition, our June meeting will be the annual 2 X 4 contest. The rules for this contest are in the May and June issues of the newsletter. If you have not started your project yet, there is still time to be creative and bring in a project for the judging. The prizes for this contest will be Higgins gift certificates.

Now for a bit of housekeeping. At the May meeting with all we had going on, I forgot to thank Floyd Gibson for all the hard work he did to make our booth at the Woodworking show a tremendous success. We have already gained a number of new members from this effort, and should gain many more in the months ahead.

Speaking of members, this club has a lot to be proud of regarding its participation. At the May meeting, we had 149 members in attendance out of a total membership of 200 give or take a couple. To put this achievement in perspective, the San Diego Area Fine Woodworkers gets between 250 and 300 members at their meetings out of over 1600 members. This really shows the commitment our members have in creating a quality club.

*(Continued on page 2)*

Your board of directors, in recognition of this accomplishment, has voted to increase the value of our small raffle items to make your attendance even more rewarding. In addition, along with this we are upping the value of the badge raffle as well. This creates an even better reason for our members to attend the meetings and to bring their name tags. Since everyone with a badge only gets one ticket, your odds of winning are increased.

Enough said for this issue. I look forward to seeing all of you at this month's events.



The SACRAMENTO AREA WOODWORKERS, also known as SAW, is an organization formed for the purpose of: Sharing woodworking experiences, information, instructions, plans, books, tools and lumber sources, ideas in producing supplement income and sharing in discounts resulting from volume buying.

2004 SAW BOARD

President	Allan Laudenslayer	*
Vice Pres.	Wade Jensen	*
Secretary	Casey Lynn	*
Treasurer	Neil Knutsen	*
Past Pres.	Bob Drotos	*
Mbr at Large	Art Quinn	*
Mbr at Large	Clayton Nye	*
Editor	Don Robinson	*
Librarian	Bob Beckert	
Toy Project	Bob Schieck	

\*Voting board member  
**MEMBERSHIP**

For all new members the dues for SAW are \$20 per calendar year. Additional dependent family members, residing in the same household of a fully paid member, shall pay 50% of annual dues. As a SAW member, you will enjoy the camaraderie of fellow woodworkers, discounts from local merchants, group buys on wood, and library privileges.

Commercial memberships are available for \$50 per year. This membership includes yearly advertising in the newsletter. Ads are to be business card size and may be changed from month to month, if desired. Contact Treasurer Neil Knutsen for more membership information.

Contributions to the newsletter must be sent to the editor Don Robinson, 1453 Musgrave Dr., Roseville, CA 95747 or Email [dlrobin@surewest.net](mailto:dlrobin@surewest.net) by the **20th of the month** for inclusion in the following month's newsletter.

**Show & Tell**



**Joe Schuchmann,  
Jigs and small items, all of which Joe learned  
to make at the different SIG's**



**Dan Moening,  
Inlayed step stool, made from  
scrap cherry pieces and  
maple for the inlay.**



**Cameron Campos,  
Walnut mantel, this is another piece made from a rough cut wal-  
nut tree years ago. (in the picture below the mantel) The wood  
had been in his customer family for sometime.**



**Andy Santos,  
Scroll Saw Gifts.**



**Abe Low,  
Warp wane & cup box or is it  
a warp cup & wane box?  
Made from a tree SMUD cut  
down and when dried, it  
cupped and warp. Who says  
wood has to be flat and  
square, to make a beautiful  
piece.**

**SHOW & TELL**



**Bob Schieck,  
Doll house furniture, bill  
dings, for toy project & one of  
his tole painting projects.**



**Doris Woods,  
Bird house wreath, partially  
painted at tole painting SIG  
and finished with artificial  
flowers**



**Bob Curnow,  
small chests, he is making  
for the toy project.**



**Neil Knutsen,  
Toy truck, poplar &  
mahogany. His thought  
behind the design was to  
relieve the tole painters  
from their demand for  
painting toys.  
Bud Vase made at the  
scroll saw SIG**



**Bob Beckert,  
Scroll Sawn portrait**

**Dick Wampach,  
sample of his famous 400 sq.  
ft. purple heart deck. Using  
3200 pocket screws, (which  
aren't visible) to hold it down**



**Bob Buckwalter.  
Hand cut dovetails  
in a apple box.**



**Judy Wavers,  
Maple & Walnut  
jewelry box**

**Novice SIG****Contact person: Floyd Gibson**

The Novice SIG met at Floyd Gibson's shop on Saturday, May 15. Floyd did a demonstration using the shaper part of his "Hammer". He was demonstrating a glue joint cutter head, to edge gluing a flat panel. He did not use his power feeder which is new to his shop and he is not experienced enough to use it for demonstration purposes. He had instructions for setup, which are available on the Woodshop demo site. The URL is <http://www.woodshopdemos.com/>



This site has a lot of information about setup and woodworking. This site is great.

Floyd also demonstrated the setup of a lock miter cutters using a table-mounted router. Instructions for this are also available at the above website. The setup is difficult, but the joint is worth the trouble. The center of bit needs to be located and the center of the work piece and needs to be marked. There is a lot of trial and error the first time you do this set up. This seems to be the trouble with this joint. The work pieces need to be the same thickness. Once you have the correct setup, be sure to make a set of "setup blocks" to use the next time. You will have to make set of blocks for each different thickness of wood.

Marilyn had goodies for all.

The next Novice SIG will be held, Saturday, June 19, at Tom Nelson's shop . Tom will bring maps at the next General Meeting. Tom is in the process of setting up a new shop. He would like to hear your ideas on the subject.

**Scrollsaw SIG****Contact person: Bob Schieck,**

In last months newsletter the dates for the Scrollsaw SIG were on two different days, May 15 and May 22. Bob Schieck held his meeting on both listed days. This way making sure everyone had a chance to participate. The combined total attendance for both meetings was 20 members. Bob had prepared a number of different scrollsaw projects, including; bill dings, frogs and a pencil holder, made of walnut, rosewood and #3 pine. At both meetings, the scrollsaws were buzzing. Bob's RBI Hawk was the most popular machine. Steven Hitchens completed about 50 % of the pencil holder, the other half he would finish on his Craftsman saw. Bob Beckert and Neil Knutsen are always available for those who need some help. Bob also has a box of scroll saw patterns he has collected over the years and they are available to the members. Bob is talking up another joint project between the Novice and Scrollsaw SIG's. This time he wants them to make a workshop clock.



In the past meetings, there has been an interest in using the lathe, so Bob seeing a chance to give the members what they want; he had setup his Shopsmith for turning. He has found that turning a bottle stopper was a project that could be finished in a short period. Bert Fortier offered to instruct and did so at both meetings. Although, at the second meeting, he brought his own turning tools. He does a better job of sharpening the tools than Bob, which Bert says is necessary for good turning. Members Neil Knutsen, Bob Beckert, Marty Martin, Andy Santos and Joe Trevino completed the project. Bob Beckert help Bert instruct at the second meeting. Bert showed how to burn a line on a turning, using a wire. Sanding with 80-grit paper was not Bert's idea of the best, but Bob could not find any finer. The stoppers were finished using a bar wax and buff with a fine cloth.



Thanks to Bob's wife for the coffee and cakes and to Bob for holding the two meetings.

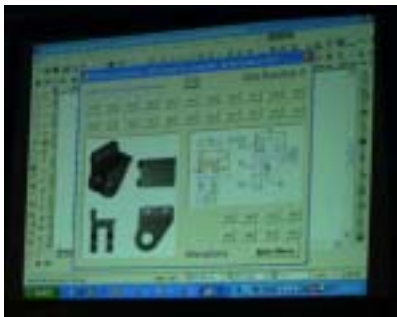
The next Scrollsaw meeting will be, June 12, 10 to 1 at Bob Beckert's shop.

**CAD SIG****Contact person: Abe Low,**

Sixteen members were present. As promised, the CAD SIG had a visit and lecture from the folks at CADCourse. They brought their equipment, which included a projector and screen so that all could see and hear the demo. It was a true "Wowzer" of a demo. I am sure I was not the only one blown away. They also brought some of their training materials, which several members bought at retail. TurboCad has grown into an amazing program with the latest professional version capable



**CADCourse,  
instructor**



of true 3D photo rendering. Many of us will be very happy to master the two dimension line drawing portions of the program. One of the demos was drawing the front, side and top views in

2D and then combining them into a 3D drawing that can be viewed from any angle. Not only that, once it is in a 3D drawing, a change made affects all views. The next meeting of the CAD SIG will be on the second Monday of June, 3pm, at Woodcraft. It should be an interesting meeting because the members should have had time to digest at least some of the tutorials to do an electronic show and tell of their upcoming projects.

**Tole Painting SIG****Contact person: Rogette Sommer**

The group meets on the second and fourth Thursday of each month, 7-9pm at the Senior

**Furniture/Finishing SIG****Contact Person: Dick Wampach**

The Furniture SIG met at Floyd Gibson's shop on May 18. Thirteen people attended. Floyd used his shaper to show us how to set up cutting a glue joint to join two boards together. It is a very good joint which gives maximum gluing surface and is self aligning. He also showed us a sample of a mini lock miter joint cut with a CMT bit. Other topics were also discussed; such as, finishes for cherry and various construction techniques. Thank you, Floyd.

Our next meeting will be hosted by Dick Wampach on June 15, preceded by a potluck dinner at 6:30 p.m. If you plan to attend, please let Dick know and tell him what you plan to bring - salad or desserts.

The subject for this meeting and a couple of more months, will be veneering. Different aspects of veneering will be discussed and practiced. The Lemons will be leading this discussion.

**2 X 4 CONTEST**

Our 2 x 4 Contest will be held during the June Meeting. What can you make using a standard framing/construction stud **ONLY**. (1 1/2" x 3 1/2" x 92 1/2").

Hardware for your project is acceptable.

The project Must be made for this contest.

The projects will be judged on the best use of the 2 x 4.

Prizes will awarded for 1st, 2nd, 3rd, & 4th place.

**LIBRARY**

Books, videos, and magazines are available to members for one month at a time when checked out of the Library at the back the meeting room. Be sure to return the items at the next meeting.

The forms for this year's competition etc. should be on the Fair's web site next week ... And we will also have them posted on [www.nettraditions.com](http://www.nettraditions.com) for your convenience.

1. This year we will not be accepting any pre-entries for 'pre-selection' as we did last year.
2. There will be an (intent to enter / fee) entry form which will be due on JUNE 11th. This doesn't leave us much 'real' time, so we must make the most of it by informing everyone to enter.
3. We will be accepting (actual) entered items on July 9th from noon - 6 pm and on the 10th from 9 am - 1 pm.
4. 'Non-Accepted' items will be picked-up July 24th.

All items will be delivered / accepted at the rear door of Building #5. We will actually display and demonstrate at Building #4, but we will accept entries in Building #5 and then after judging them we will transport them over to Building #4 for display

**June Calendar**

1	Tuesday 7-9 pm	General Meeting Ethel Hart Senior Center
5	Sat 9-4	Higgins, Lumber Bar-B-Que
10	Thursday 7-9 pm	Board meeting & Tole Painting Ethel Hart Senior Center
12	Sat 10-1	Scroll Saw SIG, Bob Beckert's Shop
14	Mon 3-5 pm	CAD SIG, Woodcraft Supply, 9545 Folsom Blvd.
15	Tuesday 7-9 pm	Furniture/finishing SIG, Dick Wampach's Shop
19	Sat 10-1	Novice SIG, Tom Nelson's Shop
24	Thursday 7-9 pm	Tole painting SIG, Ethel Hart Senior Center

## CLASSIFIED

Do you have woodworking related items to sell? Are you looking for something special for your shop? Advertise here.

### FOR SALE

**RBI Hawk variable speed 220 precision scroll saw.** Never used, foot control, video, blades, blade angle setters. 10 gauge steel legs..  
**\$1050 contact Marty Martin**

---

For Sale - **Large Redwood burl slab** for coffee table with separate redwood base. Approximately 6 ft by 3 ft, irregular shape, about 3 1/2 inches thick. Rough sanded, needs finishing. Asking \$150. contact **Craig McCulloch** for more info.

---

**Delta Unisaw Table**, with new 52" Biesmeyer Fence, \$1200 or best offer.  
Other tools and machines available as they get reconditioned. **Contact Walter Miller**

---

**3 NORTON GRINDING WHEELS**-Never used! All 3 are 8"dia. 1 inch wide, Fine. In original shipping containers \$5.00 each. **Contact Jim Bringham**

---

**Powermatic # 90 wood lathe**, older gap bed,36" between centers,12" diameter . \$1,200.  
**contact Gary at 530-889-9361**

---

**Shopsmith Mark V Model 500**  
Includes: 20" Scrollsaw and Accessory shelf  
Cost new over \$2600. Asking \$1500.  
**Contact John Galik**

---

WANTED - SUPERSHOP Model 9160 Operation Manual and Illustrated Parts List (photocopy okay) OR anyone with past experience with this older multi-function tool.  
**Contact Eugene Hayes**

---

**Sears jointer** w/ mobile base and new blades (in box) **\$100.00** (needs assy.) **Sears radial arm saw** on mobile base w/ new in box Forrest blade **\$150.00**Delta dust collection system **\$100.00 w/extras**  
**GRIP-TITE** system, \$50  
**Dubby** mitering system left side of blade, \$50  
**Contact Earl Killingsworth**

---

**16 inch RIGID Scroll saw** and portable cabinet.  
used 2 years. Saw will take both pin and pinless blades. Good saw to learn with.\$75 includes portable cabinet.  
**Contact: Ray Martin**



# WOODCRAFT

**Your Most Complete Woodworking Store!**

- Hand & Power Tools • Carving Tools & Chisels • Hardware • Routers & Accessories
- Sanding & Scraping • Woodboring Tools • Finishing Supplies • Hardwoods & Exotics
- Planes • Woodburning • Saws • Shop Accessories • Safety Equipment • Workbenches
- Marking & Measuring • Cabinet Making Supplies • Woodturning • Vises & Clamps
- Sharpening Supplies • Power Tool Accessories • Project Kits & Supplies
- Files & Rasps • Picture Framing Tools • Clock Supplies • Books & Videos • Classes

Riverwood Plaza • 9545 Folsom Blvd. • Sacramento, CA 95827  
Phone: 916-362-9664

Hrs: M-T-W-F: 9am - 7pm, Th: 9am - 9pm, Sat: 9am - 6pm, Sun: 12pm - 5pm



8500 Auburn Blvd. Citrus Heights 725-8967  
3030 W. Capitol Ave. W. Sacramento, 371-6858  
SAW Members Discount 5% off all power tools  
10% off all accessories, glue, sandpaper, etc.  
Discount doesn't apply to sale items  
Please show your SAW Membership card



## Sacramento Machinery Co.

Your Woodworking Machinery Specialist  
Since 1952!

Make Sacramento Machinery your one-stop source for:

- ★ Quality Metal & Woodworking Machinery ★
- ★ Portable Power Tools ★
- ★ Woodworking Accessories ★
- ★ Lease & Finance Programs ★
- ★ Technical Training ★
- ★ Service & Repairs ★



Store Hours:  
Mon-Fri 8-5  
Saturday 9-1

729 W. Del Paso Rd. . . 568-7514

## Turners \* WOODWORKERS \* Carvers

**LOOKING FOR THAT SPECIAL WOOD TO COMPLETE YOUR PROJECT!**

Will Call Hours Monday-Friday 7:00 am - 4:30 pm

**"HIGGINS HAS IT!"**

We offer a Variety of Speciality and Exotic Hardwoods!

**J.E. HIGGINS LUMBER COMPANY**  
1122 Joellis Way • Sacramento • (916) 927-2727 • fax: (916) 921-1842  
Visit us on the internet at [www.higlum.com](http://www.higlum.com)

**CALL US TOLL-FREE AT 1-800-241-1883**



**BILL NEMY... 445 Salo Ct. Sparks, NV 89431**

**MAKE YOUR OWN RAISED PANEL DOORS**

with your router on a router table

- 1/2" H.H.S. Spiral Bit
- Cope & Stick Cutter Set (face up)
- Raised Panel Cutter
- Finger Pull Cutter
- Adjustable Router Table Fence
- Router Table
- Video: Making Arched Raised Panels (see in SAW Library)

New Router Table fences  
8 only—Free Freight  
Reg, \$150 Special \$120

Classes in Woodworking, Wood Finishing, Leaded Glass  
Call for Pricing... Phone/Fax 775-356-2847 email [Wbn446@aol.com](mailto:Wbn446@aol.com)  
SAW member since 1982 Freight free to SAW members